

# HHW REPORTER

2ND QUARTER 2024

NEWS AND PARTICIPATION STATS FROM  
THE HOUSEHOLD HAZARDOUS WASTE CENTER

1301 Lamont Avenue  
Kalamazoo, MI 49048  
269.383.8741  
[www.kalcounty.com/hhw](http://www.kalcounty.com/hhw)



## 2024 Expected Closures:

August 5 - 10  
(Youth Fair)

September 20  
(Street Rod Nationals)

November 5  
(Election Day)

November 28 - 29  
(Thanksgiving Break)

December 24 - 25  
(Christmas Break)

Dec 31 - Jan 1  
(New Year's)

REMAINING 2024  
SATURDAY COLLECTIONS  
8:00am–12:00pm

October 12

November 9

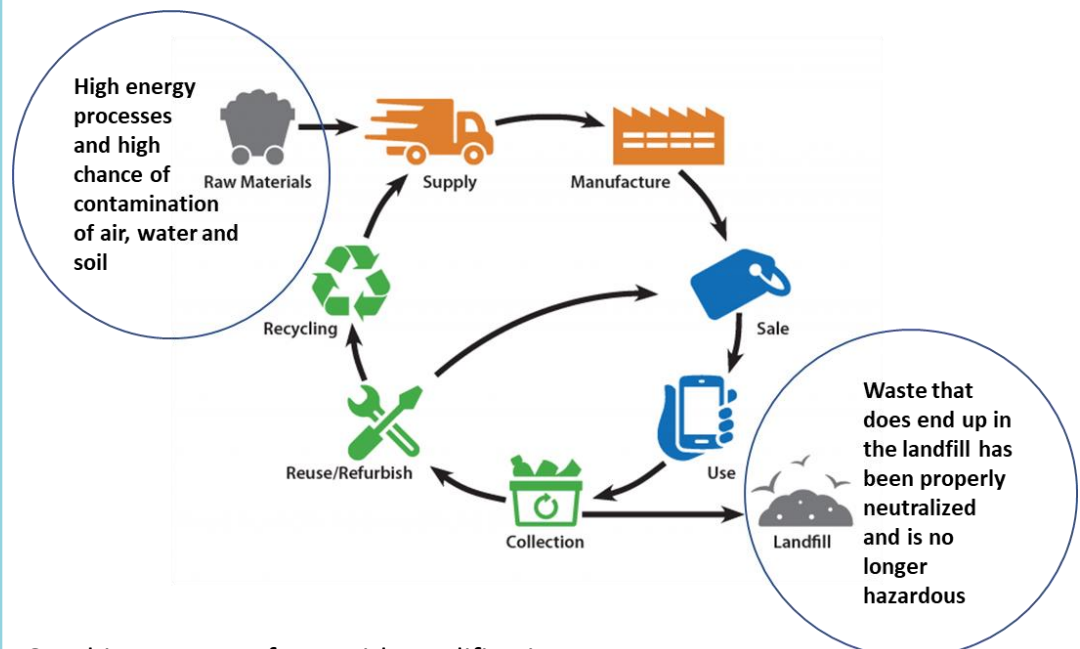
December 14

## The Household Hazardous Waste Center is Public Health in Action!

Recycling materials puts less stress on our environment as less raw materials need to be pulled from the earth to make new products. The processes used to harvest raw materials carries a high risk of contamination.

Preventing hazardous waste from going to the landfill (or other ground surface), where it can contaminate surface and drinking water.

Reducing unintentional poisonings in homes by removing unwanted/unneeded chemicals.



Graphic courtesy of EPA with modification.



**KALAMAZOO**  
COUNTY GOVERNMENT  
Health & Community Services Department

## 2ND QUARTER HHW CENTER PARTICIPATION

| Municipality                 | April       | May         | June        | 2nd Quarter Total |
|------------------------------|-------------|-------------|-------------|-------------------|
| Alamo Township               | 12          | 13          | 21          | 46                |
| Almena Township              | 15          | 6           | 11          | 32                |
| Antwerp Township             | 13          | 8           | 14          | 35                |
| Augusta Village              | 1           | 5           | 1           | 7                 |
| Berrien County               | 6           | 8           | 17          | 31                |
| Brady Township               | 18          | 24          | 6           | 48                |
| Charleston Township          | 11          | 17          | 4           | 32                |
| Climax Village               | 2           | 1           | 1           | 4                 |
| Comstock Township            | 95          | 109         | 91          | 295               |
| Cooper Township              | 38          | 55          | 28          | 121               |
| Galesburg City               | 0           | 2           | 1           | 3                 |
| Kalamazoo City               | 203         | 203         | 215         | 621               |
| Kalamazoo Township           | 79          | 78          | 63          | 220               |
| Oshtemo Township             | 81          | 80          | 75          | 236               |
| Parchment City               | 14          | 8           | 4           | 26                |
| Pavilion Township            | 23          | 40          | 11          | 74                |
| Portage City                 | 261         | 246         | 207         | 714               |
| Prairie Ronde Township       | 16          | 5           | 9           | 30                |
| Richland Township            | 42          | 57          | 41          | 140               |
| Richland Village             | 7           | 9           | 4           | 20                |
| Ross Township                | 26          | 24          | 20          | 70                |
| Schoolcraft Township         | 16          | 21          | 18          | 55                |
| Schoolcraft Village          | 2           | 7           | 4           | 13                |
| St. Joseph County            | 4           | 3           | 3           | 10                |
| Texas Township               | 63          | 81          | 84          | 228               |
| Vicksburg Village            | 13          | 9           | 6           | 28                |
| Wakeshma Township            | 0           | 3           | 8           | 11                |
| <b>Subtotal</b>              | <b>1061</b> | <b>1122</b> | <b>967</b>  | <b>3150</b>       |
| Regular HHW Paying Customers | 82          | 62          | 43          | 187               |
| Electronics Paying Customers | 27          | 10          | 11          | 48                |
| <b>Grand Total</b>           | <b>1170</b> | <b>1194</b> | <b>1021</b> | <b>3385</b>       |

## 2ND QUARTER RECYCLING COST SHARE

| BILLING PERIOD 4/1/2024 - 6/30/2024 |                          |                |                    |
|-------------------------------------|--------------------------|----------------|--------------------|
| CHEMICAL DISPOSAL COSTS             | \$28,077.67              |                |                    |
| ELECTRONICS RECYCLING               | \$4,901.99               |                |                    |
| <b>TOTAL BILLING</b>                | <b>\$32,979.66</b>       |                |                    |
| MUNICIPALITY                        | HOUSEHOLD<br>EQUIVALENTS | PERCENT        | TOTAL COST         |
| Alamo Township                      | 46                       | 1.46%          | \$481.61           |
| Almena Township                     | 32                       | 1.02%          | \$335.03           |
| Antwerp Township                    | 35                       | 1.11%          | \$366.44           |
| Augusta Village                     | 7                        | 0.22%          | \$73.29            |
| Berrien County                      | 31                       | 0.98%          | \$324.56           |
| Brady Township                      | 48                       | 1.52%          | \$502.55           |
| Charleston Township                 | 32                       | 1.02%          | \$335.03           |
| Climax Village                      | 4                        | 0.13%          | \$41.88            |
| Comstock Township                   | 295                      | 9.37%          | \$3,088.57         |
| Cooper Township                     | 121                      | 3.84%          | \$1,266.84         |
| Galesburg City                      | 3                        | 0.10%          | \$31.41            |
| Kalamazoo City                      | 621                      | 19.71%         | \$6,501.70         |
| Kalamazoo Township                  | 220                      | 6.98%          | \$2,303.34         |
| Oshtemo Township                    | 236                      | 7.49%          | \$2,470.86         |
| Parchment City                      | 26                       | 0.83%          | \$272.21           |
| Pavilion Township                   | 74                       | 2.35%          | \$774.76           |
| Portage City                        | 714                      | 22.67%         | \$7,475.39         |
| Prairie Ronde Township              | 30                       | 0.95%          | \$314.09           |
| Richland Township                   | 140                      | 4.44%          | \$1,465.76         |
| Richland Village                    | 20                       | 0.63%          | \$209.39           |
| Ross Township                       | 70                       | 2.22%          | \$732.88           |
| Schoolcraft Township                | 55                       | 1.75%          | \$575.84           |
| Schoolcraft Village                 | 13                       | 0.41%          | \$136.11           |
| St. Joseph County                   | 10                       | 0.32%          | \$104.70           |
| Texas Township                      | 228                      | 7.24%          | \$2,387.10         |
| Vicksburg Village                   | 28                       | 0.89%          | \$293.15           |
| Wakeshma Township                   | 11                       | 0.35%          | \$115.17           |
| <b>TOTAL</b>                        | <b>3,150</b>             | <b>100.00%</b> | <b>\$32,979.66</b> |

\* THIS IS NOT A BILL - INVOICE WILL BE MAILED OUT AT A LATER DATE \*

## 2ND QUARTER COLLECTIONS 2024



This wooden cabinet surprised us with a vintage 1950 radio and color TV inside. Then it continued to surprise us with a pull-down shelf hiding a record player and a Glenn Miller Orchestra record ready to play.

|  |                |
|--|----------------|
| NUMBER OF HOUSEHOLD EQUIVALENTS        | 3,150          |
| NUMBER OF PAYING CUSTOMER EQUIVALENTS  | 235            |
| NUMBER OF CLEAN SWEEP CUSTOMERS        | 10             |
| <b>ITEM(S)</b>                         |                |
| <b>POUNDS</b>                          |                |
| ELECTRONICS FROM HOMEOWNERS            | 55,125         |
| ELECTRONICS FROM PAYING CUSTOMERS      | 2,057          |
| CHEMICAL WASTE FROM HOMEOWNERS *       | 30,479         |
| CHEMICAL WASTE FROM PAYING CUSTOMERS * | 8,510          |
| ANTIFREEZE                             | 8,250          |
| COPPER WIRE                            | 2,556          |
| FIRE EXTINGUISHERS                     | 1,500          |
| OIL FILTERS                            | 560            |
| PESTICIDES                             | 4,018          |
| RECHARGEABLE BATTERIES                 | 6,489          |
| SCRAP METAL                            | 804            |
| USED MOTOR OIL                         | 28,200         |
| <b>TOTAL POUNDS COLLECTED</b>          | <b>148,548</b> |

\* acids, aerosols, ammunition, bases, batteries (alkaline & lithium), cleaners, flammable liquids, flares, fluorescent bulbs, mercury, oil based paint, organic peroxides, oxidizers, PCB ballasts, poisons/toxics, 1-lb propane cylinders

