



MICHIGAN DEPARTMENT OF ENVIRONMENT, GREAT LAKES, AND ENERGY

Work Begins at Crown Vantage Side Channel

Allied Paper/Portage Creek/Kalamazoo River Site

Kalamazoo, Michigan

September 2020

Contact EPA

If you want to know more about the various cleanup projects along the Kalamazoo River, contact:

For technical questions:

EPA

Jim Saric – Remedial Project Manager

312-886-0992

saric.james@epa.gov

EGLE

Dan Peabody – Project Manager

517-285-3924

peabodyd@michigan.gov

For general questions:

Diane Russell

EPA Community Involvement Coordinator

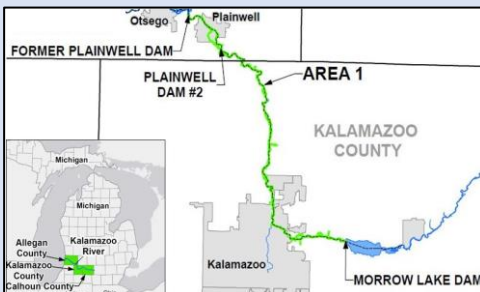
989-395-3493

russell.diane@epa.gov

You may also call EPA toll-free: 800-621-8431, weekdays, 9:30 a.m. to 5:30 p.m.

You can learn more about the cleanup online at:

<http://www.epa.gov/superfund/allied-paper-kalamazoo>.



Area 1 of the Allied Paper/Portage Creek/Kalamazoo River Superfund

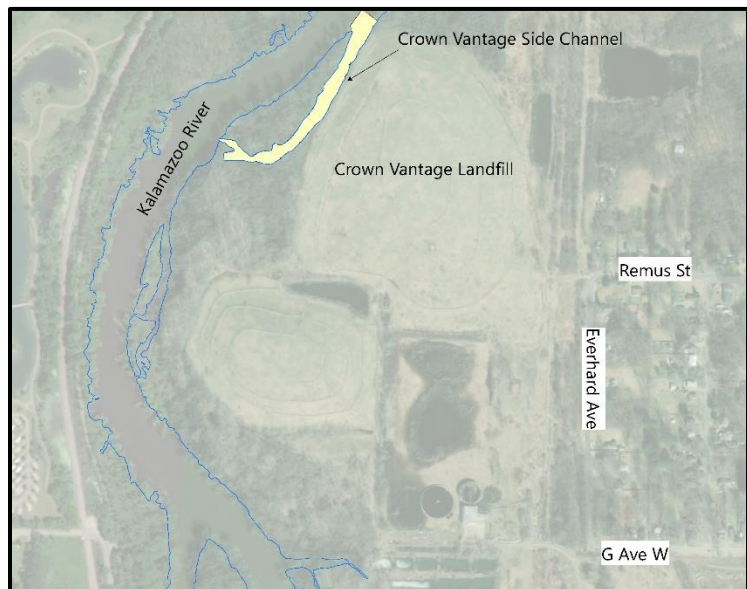
U.S. Environmental Protection Agency is overseeing the removal of PCB-contaminated sediment within the Crown Vantage Side Channel, a backwater area between the Kalamazoo River and the Crown Vantage Landfill (*see map below*). This work is part of a larger cleanup of a section of the Kalamazoo River EPA has designated as, “Area 1” (*see map in side panel below*). Georgia-Pacific LLC and International Paper Company will be conducting cleanup activities starting in early October. Throughout this project, EPA will be coordinating with Michigan Department of Environment, Great Lakes, and Energy and the Michigan Department of Natural Resources.

Work to be performed

Work is expected to begin in early October with site preparations for the removal of the side channel sediment contaminated with PCB’s, or polychlorinated biphenyls. Workers will begin by improving access roads around the landfill and setting up staging areas for equipment on the Cooper Township property. Site preparation work will include setting up staging areas to dry the removed river sediment prior to trucking the material off site for disposal at permitted landfills. Work hours will be from dawn to dusk, six days a week, Monday through Saturday. Sediment removal is planned to begin in late October and extend through early December. Restoration of the work area will be completed as construction finishes in December, but it is likely that some restoration may occur in Spring 2021.

Traffic related to work

As a result of the construction activities, vehicle traffic will increase for the duration of the project. The proposed trucking route will use an entrance off G Avenue. Workers will enter the site through the Remus Street Entrance. Workers have been instructed to be especially aware and cautious going through the adjacent residential area.



Location of Crown Vantage Side Channel and nearby roadways.

Next Steps

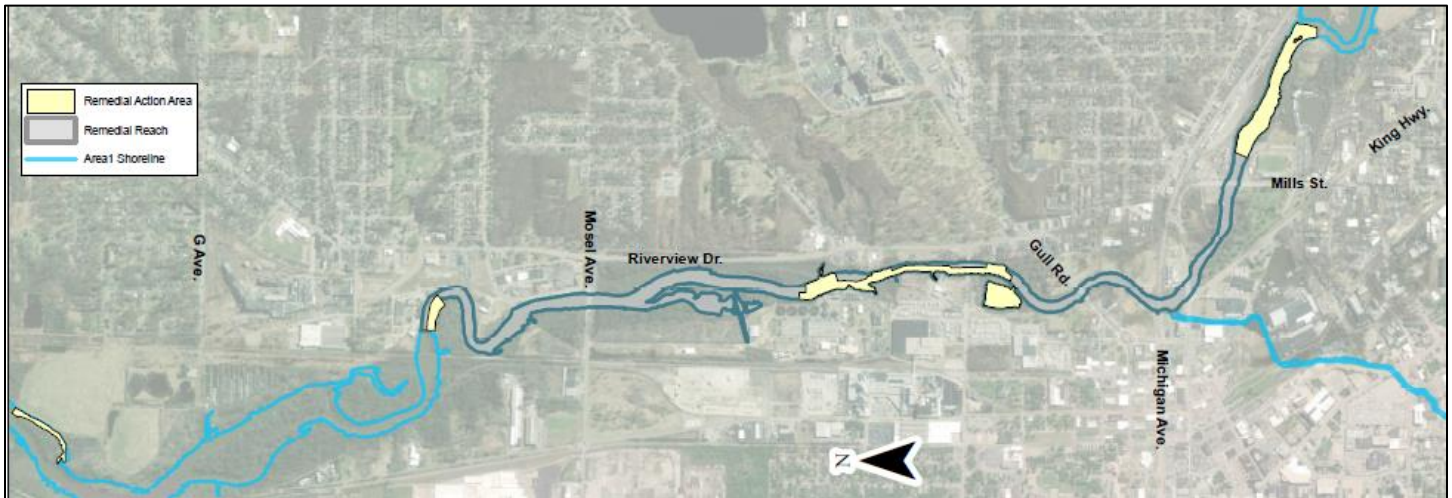
Over the next few years, additional cleanup work will take place in Area 1 (see map below). Locations of this work are highlighted in the map below. Cleanup designs are in progress and are anticipated to be completed in early 2021 with work extending through 2024.

Cleanup history and progress

In 1977, the MDNR issued a public health advisory regarding PCB contamination at the site and advised

residents not to eat fish caught from the river. In August 1990, the Kalamazoo River, as part of the Allied Paper/Portage Creek/Kalamazoo River Superfund site, was placed on the National Priorities List, a roster of the nation's most hazardous waste sites.

Since 1998, EPA-lead response actions have removed nearly 450,000 cubic yards of contaminated material from the site, cleaned up and restored 7 miles of the Kalamazoo River and Portage Creek (including banks), and capped 82 acres of contaminated material.



Cleanup areas in Area 1 of the Kalamazoo River.

Reproduced on Recycled Paper

ALLIED PAPER/PORTAGE CREEK/KALAMAZOO RIVER SITE: Work Begins at Crown Vantage Side Channel

RETURN SERVICE REQUESTED

FIRST CLASS



Community Information Office
1300 Bluff St., Suite 140
Flint, MI 48504