



KALAMAZOO COUNTY GOVERNMENT

In the Pursuit of Extraordinary Governance...

**NEWS RELEASE
FOR IMMEDIATE RELEASE**
February 21, 2019

Matt Johnson, Public Information Officer
pio@kalcounty.com
269-373-5270 or 269-373-5271

February 21, 2019: Weekly Update on Kalamazoo County Water Quality

KALAMAZOO, MI — A weekly news release will be sent on Thursdays at 4:00 p.m. with the latest information surrounding all water quality related activities occurring within Kalamazoo County. Residents can also follow www.facebook.com/KalamazooCountyHCS/ or visit www.kalcounty.com/hcs/pfasresponse.php.

Parchment/Cooper Township:

The Michigan Department of Environmental Quality (MDEQ) continues to oversee the Hydrogeologic Investigation being done by Georgia Pacific and Tetra Tech into PFAS contamination of groundwater. MDEQ and Tetra Tech have begun Phase II of the PFAS study including the continued installation of monitor wells and well sampling. The Phase I PFAS groundwater sampling results have now all been received. Phase I groundwater sampling included the collection of 15 groundwater samples from 10 different monitoring well locations. Most of these well locations are located around the outer edge of the study area and were installed in an effort to help delineated the extent of the PFAS contamination. Three of these monitoring well locations have nested sets of wells installed at different depths. Out of the 15 samples that were collected 14 had results significantly below the 70 part per trillion (ppt) for PFOA & PFOS. Monitoring well MW-1809A was the only Phase I well that exceeded the 70 ppt. MDEQ collected split samples from all the wells during Georgia Pacific/Tetra Techs sampling activities and submitted them to a different laboratory for analysis. MDEQs analytical results confirm the Georgia Pacific/Tetra Tech results. Attached are maps showing the study area, monitoring well locations and results from the residential well and Phase I well sampling.

Kalamazoo County has created a listserv that will be used to disseminate PFAS updates, newsletters and routine communications to you instantly via email. If you would like to subscribe to this listserv please go to: <http://www.kalcounty.com/hcs/groundwater-listserv.htm>

You will then be asked for your name and e-mail address. After submitting these you will be subscribed to the listserv. The email addresses on the listserv are used for county purposes only and are not distributed to any third parties. You may unsubscribe to the listserv at any time as every email you receive will include an easily found option to unsubscribe. Once you subscribe, you will receive an email that verifies your subscription. Please make sure that any spam filter that you are using does not block email from kalcountyeh.simplelists.com. Please call the Kalamazoo County Environmental Health office at 269-373-5210 if you have any questions.

HEALTH AND COMMUNITY SERVICES DEPARTMENT

311 East Alcott Street, Kalamazoo, MI 49001

www.facebook.com/KalamazooCountyHCS/ | www.kalcounty.com/hcs



Monitoring Wells

December 2018 Sample Result - PFOA plus PFOS

- ND at the RL (2 ng/L)
- >RL - 10 ng/L
- 10 ng/L - 70 ng/L
- ◆ January 2019 Laboratory Results Pending
- ◆ Planned for Future Sampling

1. RL = Laboratory Reporting Limit
2. ng/L = nanograms per Liter
3. PFOA = Perfluorooctanoic Acid
4. PFOS = Perfluorooctane Sulfonic Acid
5. Samples were collected by Tetra Tech in December 2018.
6. 70 ng/L for PFOA plus PFOS is the Michigan Department of Environmental Quality Drinking Water Criteria per Part 201, of the Natural Resources and Environmental Protection Act, 1994 PA 451, as amended, and the Part 201 Administrative Rules, Table 1 (June 25, 2018).

0 1,000 2,000 Feet



ORIGINAL: LAS

DATE: 01/28/19

REVISED:

DATE:

HYDROGEOLOGICAL INVESTIGATION
 GEORGIA-PACIFIC
 PARCHMENT, MICHIGAN

**MONITORING WELL - WATER TABLE (UNCONFINED)
 LABORATORY RESULT SUMMARY - DECEMBER 2018**

FIGURE

1



Monitoring Wells

December 2018 Sample Result - PFOA plus PFOS

● ND at the RL (2 ng/L)

⬇ January 2019 Laboratory Results Pending

◆ Planned for Future Sampling

1. RL = Laboratory Reporting Limit

2. ng/L = nanograms per Liter

3. PFOA = Perfluorooctanoic Acid

4. PFOS = Perfluorooctane Sulfonic Acid

5. Samples were collected by Tetra Tech in December 2018.

6. 70 ng/L for PFOA plus PFOS is the Michigan Department of Environmental Quality Drinking Water Criteria per Part 201, of the Natural Resources and Environmental Protection Act, 1994 PA 451, as amended, and the Part 201 Administrative Rules. Table 1 (June 25, 2018).

0 1,000 2,000 Feet



ORIGINAL: LAS

DATE: 01/29/19

REVISED:

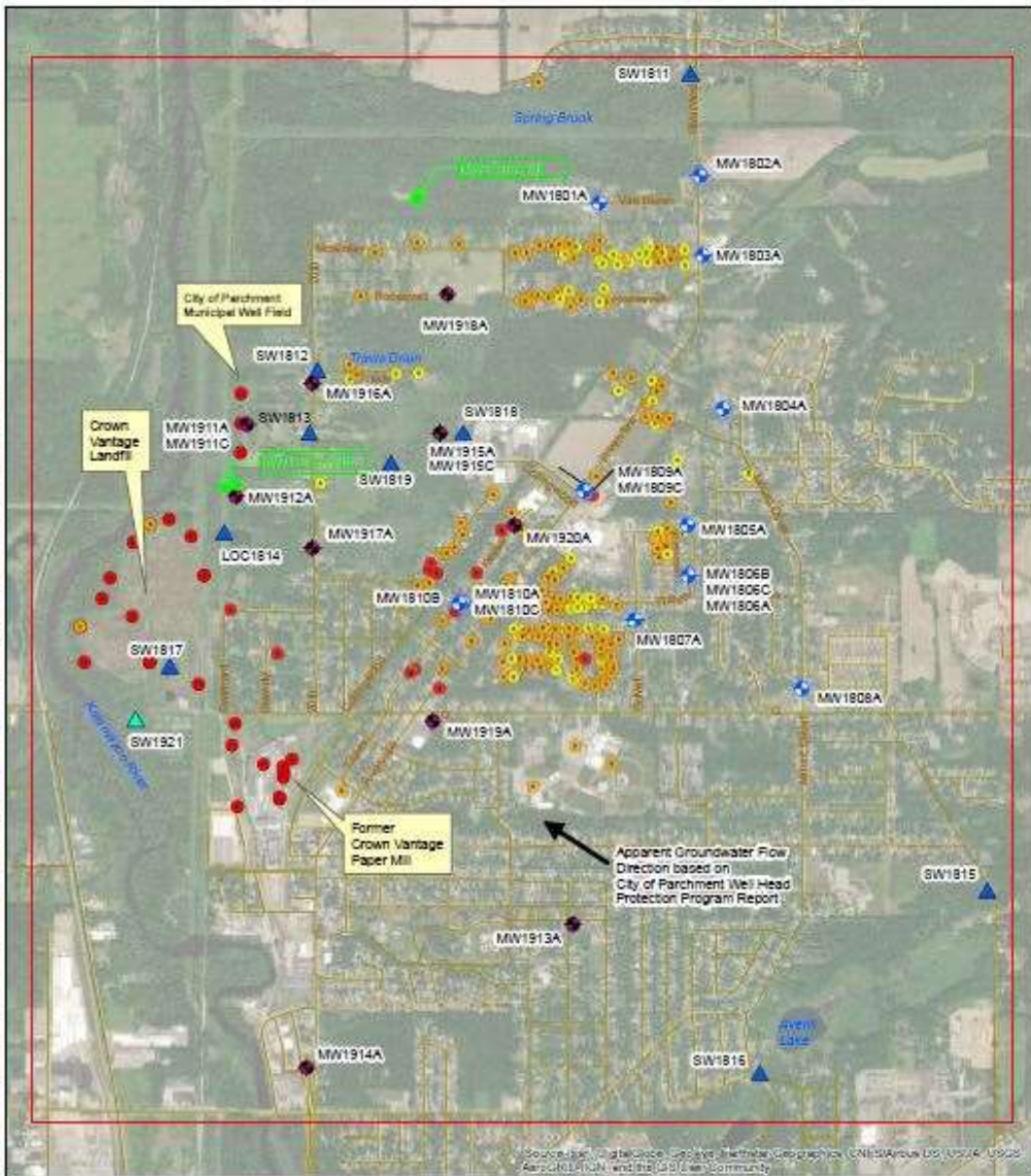
DATE:

HYDROGEOLOGICAL INVESTIGATION
GEORGIA-PACIFIC
PARCHMENT, MICHIGAN

**MONITORING WELL - SEMI CONFINED/CONFINED
LABORATORY RESULT SUMMARY - DECEMBER 2018**

FIGURE

2

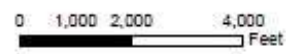


Legend

- Study Area
 - ◆ Proposed Phase II Monitoring Well
 - ▲ Proposed Phase II Surface Water Sample
 - ▲ Phase I Surface Water Sample
 - ◆ Phase I Monitoring Well
 - Surface Water
- Sample Locations with PFOA plus PFOS Results**
- Non-Detect
 - >1-70 ng/L
 - >70 ng/L

Notes

1. Nomenclature definitions for MW1801A, B or C
 "MW" = monitoring well
 "18" = year of installation
 "01" = location number
 "A" = shallowest well at location
 "B" = intermediate well at location (between shallow and deep)
 "C" = deepest well at location
2. PFOA = Perfluorooctanoic Acid, PFOS = Perfluorooctane Sulfonate
3. PFOA and PFOS results obtained by the Michigan Department of Environmental Quality (MDEQ) July to August 2018.
4. 70 nanograms per Liter (ng/L) for PFOA plus PFOS is the MDEQ Drinking Water Criteria per Part 201, of the Natural Resources and Environmental Protection Act, 1994 PA 451, as amended, and the Part 201 Administrative Rules. Table 1(June 25, 2018).



ORIGINAL BY: J. MCFETERS
DATE: 10/12/2018
REVISED BY: J. DEMOBS
DATE: 1/3/2019

HYDROGEOLOGICAL INVESTIGATION WORK PLAN ADDENDUM
 GEORGIA-PACIFIC
 PARCHMENT, MICHIGAN
PROPOSED SAMPLE LOCATION MAP

FIGURE
2

Parchment/Cooper Township Continued:

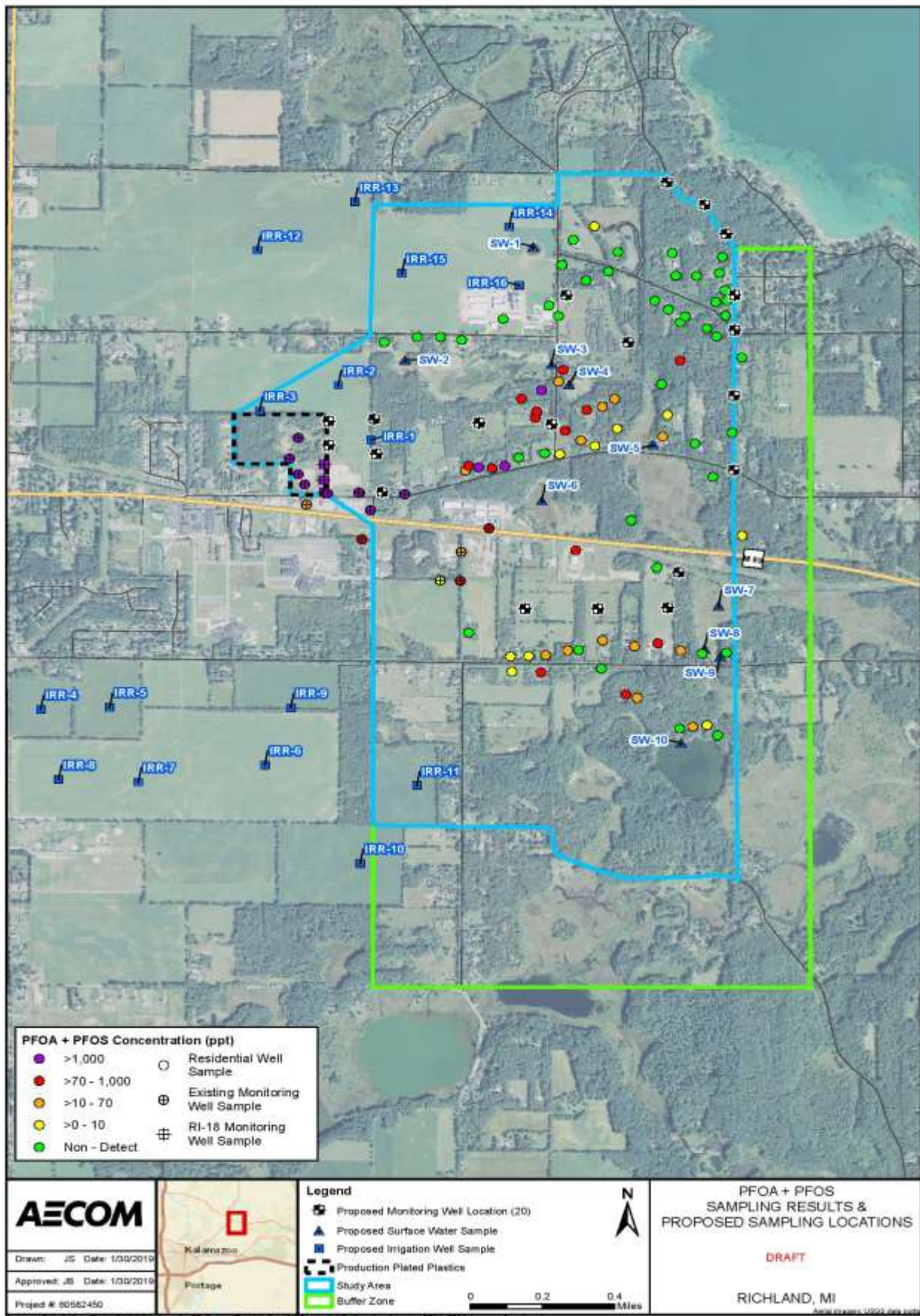
Additionally, regarding lead testing, residents can call the City of Parchment at 269-349-3785 or the City of Kalamazoo at 269-337-8550 to have their water tested for lead and to receive a lead filter. For questions about installing the lead filter, residents should call 269-337-8550.

Richland:

The Michigan Department of Environmental Quality (MDEQ) has completed the installation of the first phase of Remedial Investigation monitoring wells in the study area. These monitoring wells will be developed and sampled within the next one to two weeks. This week the MDEQ also began the residential well sampling activities in the expanded study area south of DE Ave. A majority of the residential wells in this area have been collected already this week and scheduling for the remaining sampling is currently taking place. Michigan Department of Health and Human Services (MDHHS) and Kalamazoo County Health & Community Services Department have provided notification to these residents of the sampling, and out of an abundance of caution, all residents in the expanded residential water well program area and buffer zone have been offered PFAS filters.

Kalamazoo County has created a listserv that will be used to disseminate PFAS updates, newsletters and routine communications to you instantly via email. If you would like to subscribe to this listserv please go to: <http://www.kalcounty.com/hcs/groundwater-listserv.htm>

You will then be asked for your name and e-mail address. After submitting these you will be subscribed to the listserv. The email addresses on the listserv are used for county purposes only and are not distributed to any third parties. You may unsubscribe to the listserv at any time as every email you receive will include an easily found option to unsubscribe. Once you subscribe, you will receive an email that verifies your subscription. Please make sure that any spam filter that you are using does not block email from kalcountyeh.simplelists.com. Please call the Kalamazoo County Environmental Health office at 269-373-5210 if you have any questions.



###

Kalamazoo County Government
Health & Community Services Department

 [Like Kalamazoo County Health & Community Services](#)  Follow us [@KzooHealth](#)