



KALAMAZOO COUNTY GOVERNMENT

In the Pursuit of Extraordinary Governance...

**NEWS RELEASE
FOR IMMEDIATE RELEASE**
December 6, 2018

Matt Johnson, Public Information Officer
pio@kalcounty.com
269-373-5270

December 6, 2018: Weekly Update on Kalamazoo County Water Quality

KALAMAZOO, MI — A weekly news release will be sent on Thursdays at 4:00 p.m. with the latest information surrounding all water quality related activities occurring within Kalamazoo County. Residents can also follow www.facebook.com/KalamazooCountyHCS/ or visit www.kalcounty.com/hcs/pfasresponse.php.

Parchment/Cooper Township:

On Nov. 27, representatives from the Michigan Department of Health and Human Services and Kalamazoo County Health & Community Services began a door-to-door outreach effort to 320 home owners within The City of Parchment with known or possible lead service lines. To date, 113 residents have been provided with water filters certified to reduce lead in water and information about lead. Information was also left with the owner regarding lead testing opportunities, cleaning home faucet aerators that can trap lead particulates, information to reduce lead exposures and healthy eating tips. For those residents unable to be contacted by letter or door-to-door efforts, a door hanger was left behind with instructions to contact the City of Kalamazoo for lead water testing and a lead filter.

Residents can call the City of Parchment at 269-349-3785 or the City of Kalamazoo at 269-337-8550 to have their water tested for lead and to receive a filter. For questions about installing the filter, residents should call 269-337-8550.

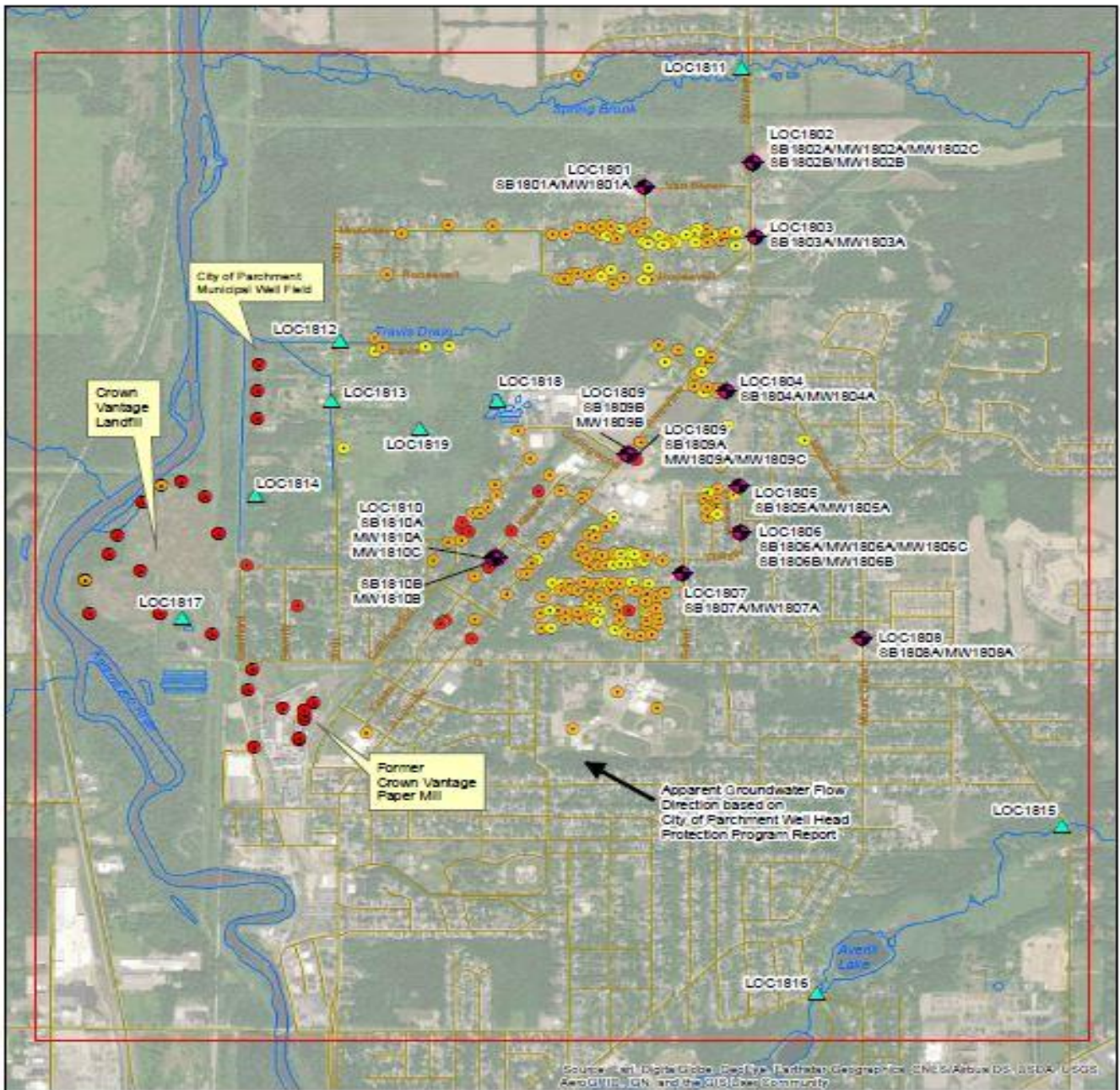
The Michigan Department of Environmental Quality (MDEQ) continues to oversee the Hydrogeologic Investigation being done by Georgia Pacific and Tetra Tech. The first phase is being conducted in public rights-of-way or accessible public property. Additional phases will be conducted on private properties as access to those properties is obtained. Georgia Pacific and Tetra Tech are currently in the process of installing monitor wells.

Below is a map detailing all testing locations and results to date in the City of Parchment and Cooper Township. Also included in the map are currently proposed monitor well locations and surface water testing locations.

HEALTH AND COMMUNITY SERVICES DEPARTMENT

Parchment Water Hotline: 269.373.5346

www.facebook.com/KalamazooCountyHCS/ | www.kalcounty.com/hcs



Legend

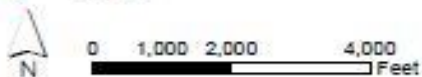
- Study Area
- Surface Water

Proposed Sample Locations

- Monitoring Well
- ▲ Surface Water

Sample Locations with PFOA plus PFOS Results

- Non-Detect
- >1-70 ng/L
- >70 ng/L



Notes

1. Nomenclature definition for LOC1801
 "LOC" = location
 "18" = year
 "01" = location number
2. Nomenclature definitions for SB1801A or B
 "SB" = soil boring
 "18" = year of installation
 "01" = location number
 "A" = first soil boring drilled at location
 "B" = second soil boring drilled at location
3. Nomenclature definitions for MW1801A, B or C
 "MW" = monitoring well
 "18" = year of installation
 "01" = location number
 "A" = shallowest well at location
 "B" = intermediate well at location (between shallow and deep)
 "C" = deepest well at location
4. PFOA = Perfluorooctanoic Acid, PFOS = Perfluorooctane Sulfonate
5. PFOA and PFOS results obtained by the Michigan Department of Environmental Quality (MDEQ) July to August 2018.
6. 70 nanograms per Liter (ng/L) for PFOA plus PFOS is the MDEQ Drinking Water Criteria per Part 201, of the Natural Resources and Environmental Protection Act, 1994 PA 451, as amended, and the Part 201 Administrative Rules, Table 1 (June 25, 2018).

Richland

The Michigan Department of Environmental Quality (MDEQ) continues field work for the Remedial Investigation in Richland with the installation of monitoring wells. The map below outlines the study area, previous residential well sampling results, and monitor well sites. MDEQ has expanded the Remedial Investigation study area to include DE Ave starting at 35th St and expanding a mile east. These residents will be provided a PFAS filter out of an abundance of caution while the remedial investigation continues. MDEQ and Kalamazoo County Health & Community Services have reached out to these residents via letter about residential well testing

Alamo Township

For more information on Dioxins and the Allegan County response, please visit the Allegan County Health Department Website:

<http://cms.allegancounty.org/sites/Office/Health/EH/GI/SitePages/Otsego.aspx#.W9tZFvkrK70>

###

Kalamazoo County Government
Health & Community Services Department

 [Like Kalamazoo County Health & Community Services](#)  Follow us [@KzooHealth](#)