



# KALAMAZOO COUNTY GOVERNMENT

In the Pursuit of Extraordinary Governance...

**NEWS RELEASE  
FOR IMMEDIATE RELEASE**  
November 1, 2018

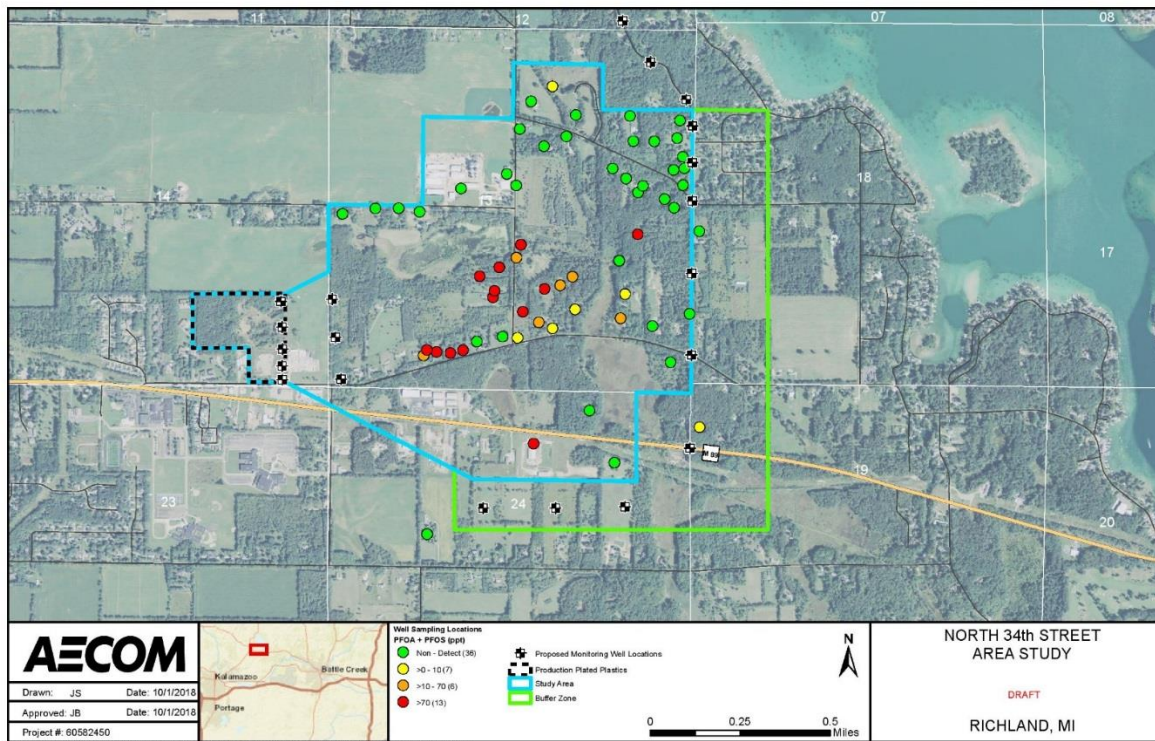
Matt Johnson, Public Information Officer  
pio@kalcounty.com  
269-373-5271

## November 1, 2018: Weekly Update on Kalamazoo County Water Quality

KALAMAZOO, MI — A weekly news release will be sent on Thursdays at 4:00 p.m. with the latest information surrounding all water quality related activities occurring within Kalamazoo County. Residents can also follow [www.facebook.com/KalamazooCountyHCS/](https://www.facebook.com/KalamazooCountyHCS/) or visit [www.kalcounty.com/hcs/pfasresponse.php](http://www.kalcounty.com/hcs/pfasresponse.php).

### Richland

The Michigan Department of Environmental Quality (MDEQ) has begun field work for the Hydrogeologic Investigation in Richland. The map below outlines the study area, previous residential well sampling results, and monitor well sites.



For the latest updates please refer to prior press releases.

## HEALTH AND COMMUNITY SERVICES DEPARTMENT

Parchment Water Hotline: 269.373.5346

[www.facebook.com/KalamazooCountyHCS](https://www.facebook.com/KalamazooCountyHCS/) | [www.kalcounty.com/hcs](http://www.kalcounty.com/hcs)

**Parchment/Cooper Township:**

The Michigan Department of Environmental Quality (MDEQ) has formally approved the Remedial Investigation work plan made by Georgia Pacific. Georgia Pacific is set to begin the first phase of work the week of November 12. The first phase will be conducted in public rights-of-way or accessible public property. Additional phases will be conducted on private properties as access to those properties is obtained.

For the latest updates please refer to prior press releases.

**Alamo Township**

For more information on Dioxins and the Allegan County response, please visit the Allegan County Health Department Website:

<http://cms.allegancounty.org/sites/Office/Health/EH/GI/SitePages/Otsego.aspx#.W9tZFvkrK70>

###

Kalamazoo County Government  
Health & Community Services Department

 [Like Kalamazoo County Health & Community Services](#)  Follow us [@KzooHealth](#)